

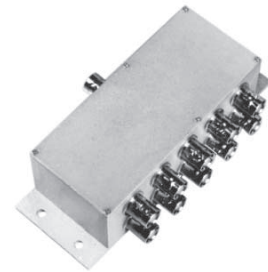
POWER DIVIDERS

0° : 10-WAY



THROUGH HOLE MOUNT (16 -Pin)

FREQUENCY RANGE (MHz)	ISOLATION (dB)			INSERTION LOSS (dB)			PHASE UNBALANCE (Degrees)			AMPLITUDE UNBALANCE (dB)			PACKAGE	PIN-OUT (See Below)	MODEL
	LB TYP/MIN	MB TYP/MIN	UB TYP/MIN	LB TYP/MAX	MB TYP/MAX	UB TYP/MAX	LB MAX	MB MAX	UB MAX	LB MAX	MB MAX	UB MAX			
1-150	36/23	27/23	23/18	0.3/0.6	0.4/0.8	1.0/1.3	1	4	10	0.1	0.2	0.3	124	1	DXP-9A2



COAXIAL CONNECTOR

FREQUENCY RANGE (MHz)	ISOLATION (dB)			INSERTION LOSS (dB)			PHASE UNBALANCE (Degrees)			AMPLITUDE UNBALANCE (dB)			PACKAGE	PIN-OUT (See Below)	MODEL
	LB TYP/MIN	MB TYP/MIN	UB TYP/MIN	LB TYP/MAX	MB TYP/MAX	UB TYP/MAX	LB MAX	MB MAX	UB MAX	LB MAX	MB MAX	UB MAX			
5-200	25/20	32/23	25/18	0.8/1.3	0.9/1.2	1.2/1.6	4.0	6.0	8.0	0.5	0.6	0.8	171	2	DXK-772B■
5-200	25/20	32/25	25/20	0.7/1.2	0.9/1.1	1.2/1.5	4.0	6.0	8.0	0.5	0.6	0.8	171	2	DXK-702B

Power Rating (All Models) = 1 Watt, max

■ 75 Ohm Model

For pin location and package outline drawings, see back pages.

PIN-OUT TABLE

	INPUT	OUTPUTS	CASE GROUND
#1	1	2,3,4,8,9,12,13,14,15,16	5,6,7,10,11
#2	1	2,3,4,5,6,7,8,9,10,11	-

LB = LF to 10 LF
 MB = 10 LF to HF/2
 UB = HF/2 to HF